



KABA®

Safelock range

The quality of product, the strength of keys, the pedigree of technology



Kaba was formed in Switzerland in 1862 by Franz Bauer. In 2001 Kaba acquired Kaba Ilco in the USA, bringing together safelock companies Kaba Mauer and Kaba Mas, both offering an extensive mechanical and electronic safelock range. The Kaba Mauer SL525 range of electronic locks and the Kaba Mas Cencon mechanical safelock provide unrivalled features and benefits for end users. In particular the Kaba Cencon which is a onetime combination lock ideal for ATM's and the Auditcon range which is a government approved SEAP 3 safelock. Ultimate security is offered through the Paxos safelock which is renowned as the World's most reliable electronic safelock.

Kaba - Safe and Secure

The quality of product, the strength of keys, the pedigree of technology, combined with reliability and availability, ensures Kaba safelocks are suitable for the protection of cash in ATMs, Safes, Filing cabinets. Whether in the retail sector, financial institutions or MOD establishments, protection from intent within is as critical as defence against outside aggression. Kaba's mission is an ongoing quest for excellence, focused on customer benefit, backed by quality products. This makes Kaba a winning combination.

Contents

Paxos Compact	3
Cencon S2000/2000V	4
Cencon Software	5
Axessor®	6
Questor	7
Kaba Mauer SL525	8
Auditcon® Model 552	9
Auditcon® Model 252	10
Auditcon® Model 52 series	11
Variator B - 70076	12
Variator A - 70091	12
Praetor 70079	13
President 7111	13

Paxos[®] Compact

Technical Features

The high-security locking system Paxos compact is designed for use in safes of high security levels, and has been tested and certified by various testing institutes. It can be installed in virtually any safe, vault door, etc. In particular, retrofitting and exchanging locks in existing installations (replacement of mechanical locks) is possible with little effort.

Already the minimum configuration contains extensive functions:

- Automatic or manual locking and scrambling
- Manipulation detection and blocking
- Opening delay (normal/hold-up)
- Duress code
- On-line user guidance in desired language with 2-line,16-digit LC-display
- Bi-directional, active full-redundant motor-bolt lock
- Fourfold adjustable bolt-throw
- Monitoring of the door-open period
- Sabotage monitoring
- Voltage monitoring
- Error recognition and diagnostics
- Code hierarchy with 26 opening codes and 1 master code, mutation code, time code for each lock
- Event memory

Approvals / Certificates

- EN1300 B, C, D / VdS Classes 2, 3 or 4

Product range

Input unit

Keypad or dialling-knob input

Lock unit

Bi-directional, active full-redundant motor-bolt lock with integrated evaluation and control electronics. A single lock type suitable for use as a first or second lock unit.

Second lock unit

Fully integrated two-lock function, can be operated and configured with one input unit.

Connection and options box

Includes alarm interface and log output.

Prerequisite for optional PCB:

- **Time functions (PCB A)**
Time and date for display and event log, weekly locking-period programme, pre-programmable locking-periods, partial-locking, locking-period interruption, summer/winter time changeover.
- **Mains operation (PCB B)/UPS**
Includes power supply, surge and EMC protection as well as interface for online-logging and tamper alarm. Autonomy in case of power failure >72 hours (one-lock operation without Authorisation disabling and online logging).
- **Authorisation Disabling (PCB C)**
(PCB C, precondition: Mains operation or UPS connection). Includes active sabotage monitoring of the incoming line and potential decoupling of the external connection (key switch, modem, keypad etc.)

Event time

(installed in a box, no combination with other options). Time and date for display and event log, summer/winter time changeover, log output.

Blocking element VdS

For combined use as a numeric combination code lock and as a blocking element in the controlled sequence for arming a danger detection system. Also available as an upgrade set.



Cencon S2000 / 2000V

The World's Leading ATM Lock

Access Control

A user needs both a One Time Combination and a Smart Key to access the lock.

One Time Combination™

A One Time Combination is dispatched each time access is required to a container controlled by a Cencon lock.

Smart Key™

An encrypted electronic key, used as a personal identifier, programming device or to transfer data between system components, which authenticates the audit trail.

Close Seal™

The Close Seal acts as an electronic signature, stamping the date and time showing the lock was locked and secured and by whom.

Duress

When combined with a connection to an alarm system, entering a special "Duress" Combination will automatically send a silent alarm to your security facility while allowing the service technician entry to the lock. This helps ensure the safety of your personnel and the commodities you protect.

Bolt Switch

Cencon System 2000 comes standard with the capability to connect an alarm system to monitor the position of the lock bolt. Upon retraction or extension of the bolt, the signal can arm or disarm the alarm.

Alarm Shunt Operation

Cencon is compatible with most alarm systems. Entering the correct One Time Combination and presenting the assigned Smart Key deactivates the alarm.

Audit Trail

Cencon System 2000 records all lock activity up to 956 events, and permits easy downloading of the information via a Smart Key for generating detailed audit reports.

Easy Retrofit

Cencon has the same footprint as conventional mechanical combination locks, making the retrofit process easy.

User Friendly Software

Cencon System 2000 software allows you to control hundreds of containers with no special wiring. The Windows 95/98 point-and-click interface makes it simple to install and use.

Cencon System 2000® Features

Three Modes of Operation

Cencon locks can operate in any of three modes - one for the First Line Maintenance personnel (FLM Mode), one for cash replenisher or armoured service (Route Mode), and one for bank employees (Bank Mode). Each mode addresses the individual access needs for each category of user. Cencon System 2000 locks can be operated in any of these three modes - individually or in combination.

One Time Combination

A One Time Combination is dispatched each time access is required to a container controlled by a Cencon lock.

Approvals / Certificates

- EN1300 B / VdS Class 2



Cencon 4 software specifications

- Qty Locks Controlled
 - Unlimited w/ enough PC space
 - Qty Users Controlled
 - Unlimited w/ enough PC space
 - Qty of Audit Events
 - Unlimited when properly archived
 - Multi-Level Access - Yes
 - Audit Reports - Yes
 - Lock Status Reports - Yes
 - User Reports - Yes
- Operating System
 - Microsoft Windows Vista 32/64 bit (Service Pack 2), XP 32 bit Professional (Service Pack 3)
 - Min. PC Requirements
 - 2 GB RAM; 50 MB Available hard disk space initially (hard disk space requirement will grow as database files grow); available USB port for USB Key Box.

FLM Mode

Key + OTC (One-Time Combination)

Use Cencon 4 Software
(CenTran optional)



Designed for First Line Maintenance personnel, the FLM mode of the Cencon lock permits the dispatch centre to give an OTC to a technician "on the fly". FLM personnel are each issued a blue Smart Key and call their dispatch centre to request an OTC. Once used, this combination will not function again, thus insuring absolute access control. Once the Cencon unit is locked, a Close Seal code is displayed on the lock's LCD and when entered into the dispatch centre's computer, assures that the Cencon is locked and secure.

Route Mode

Key + OTC (One-Time Combination)

Use Cencon 4 Software
(CenTran optional)



While permitting the same access control as FLM Mode, Route Mode additionally allows pre-defined routes for armored cash replenishers. Route personnel are each issued a yellow Smart Key. A route of locks may be assigned permitting route personnel to access a series of locks without contacting their dispatch centre between each opening. Route personnel can either call their dispatch centre at the end of the shift to report the close seals, or the close seals can be read from the key by the Cencon software.

Bank Mode

Key + RAC (Repeatable Access Code)

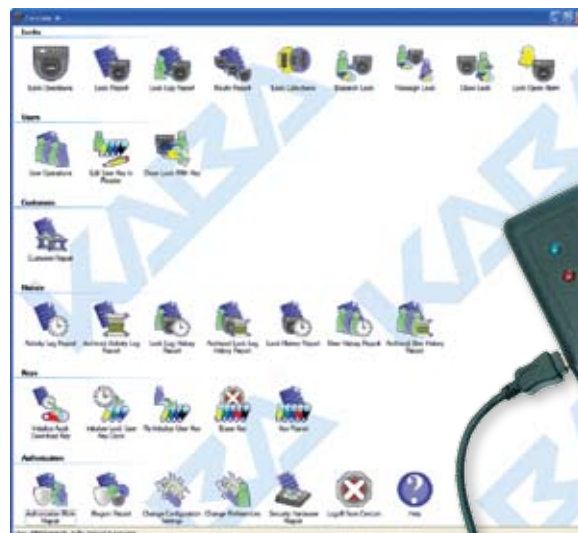
Use Cencon 4 Software



Bank Mode is designed for bank personnel who may need access to the Cencon lock but do not wish to operate through a dispatch centre. Green Smart Keys and combinations are issued to bank personnel who may unlock the Cencon lock at any time within that user's access schedule. An internal audit trail tracks all activity of bank personnel just as it does for FLM and Route personnel. Kaba Mas Cencon 4 software permits bank administrators to manage Bank Mode on site. Bank users may be added or deleted and audit trails may be downloaded from the lock.



Keys



BPC box, software and new key

Kaba Axessor

Modular, Flexible, Networked

The modular electronic safe lock

Axessor can be networked or used as a stand-alone unit.

It can be used wherever organisational flexibility, fast response and increased security are required.

It is the ideal safe lock for organisations with large branch networks, such as banks, post office, retail and restaurant chains.

Codes

- 1 Master code
- 4 Manager codes
- 36 User codes
- 1 Courier code

Code Functions

- Selectable code format
- Dual mode for opening (from same, different or any group)
- Dual mode for programming
- Individual or group code denial
- Wrong try lockout after 4 false codes
- Duress code (silent alarm)
- Shelve function

Time Lock Functions

- Normal and duress time delay
- Confirmation window
- Two time lock interruptions windows
- Non-return time delay
- Remote opening disable
- Automatic DLST (summer/winter time changeover)*
- Holiday periods
- Weekly time lock

Access Rights

- Selectable access by managers and users for immediate locking
- Selectable lock opening by master and manager
- Selectable manager access to users of all groups

Other Functions

- Low voltage detection
- Battery status display
- Non-erasable opening counter
- Selectable display of next opening time
- Error diagnosis, recognition and display

Audit

- Audit with time stamp (4800 events)

Alarm Connection

- **Outputs:** 2 Outputs (e.g. bolt position, duress alarm, additional trigger criteria programmable). Selectable polarity (NO or NC)*
- **Inputs:** 2 Inputs (e.g. door contact, remote blocking, additional trigger criteria programmable). Selectable polarity (NO or NC)*

Power Supply

- Battery, external power supply

Input Unit

- Metal housing in black
- Silicon rubber keypad with red navigation keys
- Integrated battery compartment
- Large, contrasted LC display
- Operator selectable display language
- Buzzer
- Built-in USB interface

Lock Unit

- Adaptable bolt function: Dead bolt / Spring bolt**
- 5 N moving force in both directions
- Bolt with 2 threads M4

e-B@x

- Networkmodule - LAN
- 5 x Inputs and outputs
- 2 x Axessor-Bus
- 1 x external power supply



Networkdevice (e-B@x)

Kaba Axessor Features:

- Patented motor lock with automatic locking
- Adaptable bolt function: dead bolt/spring bolt
- Fast retrofitting, standard footprint
- High quality, rugged metal input unit with elegant design
- LCD display
- Long battery life
- External power supply
- Remotely accessed reducing administration and travel costs
- Time lock functions weekly and yearly periods
- Audit Trail 4800
- Standalone or networked
- Data encryption (AES-256)

Approvals / Certificates

- ECB-S, EN 1300 level B, VdS Class 2, VdS strike plate contact for IDS class C, CNPP a2p level B, UL Typ 1

Spy Shield also available with Axessor, Questor and SL525.



Spy Shield also available with Axessor, Questor and SL525

Approvals / Certificates

- EN 1300 B, ECB-S, VdS class 2, CNPP a2p level B, UL Type 1
- Optional Spy Shield available

Kaba Questor

The Interactive Code System for safes

The One Time Combination lock Questor is characterised by its Interactive Code System (ICS).

In ICS Mode the user registers at the lock with his personal ID. The ICS ensures on site presence and generates a temporary, person-related and situational specific One Time Question. Only after telephonic forwarding of this question to the dispatch centre and verification of the data, the user gets a One Time Code to open the lock from the dispatch centre. Every event is recorded to guarantee the maximum transparency.

Codes

- 1 Master
- 2 Managers
- 18 Users
- 1 Courier

Code Functions

- OTC with close code, incl. battery status and lock/door activity feedback
- Temporary code validity
- Wrong try lockout after 4 false codes
- Duress code (silent alarm)
- Selectable code format
- Single mode (1 x 6 digits)
- Dual mode (2 x 6 digits)
- Shelf function

Time Lock Functions

- Time delay
- Duress time delay
- Opening window
- Non-return time delay
- Automatic DLST (summer/winter time) changeover

Audit

- >4,800 events

Power Supply

- 3 x 1.5 volt Alkaline batteries LR6/AA (included in delivery)

Input Unit

- Metal housing in black
- Silicon key pad, green navigation keys
- LC display and buzzer
- Integrated battery compartment

Lock Unit

- Motor bolt, 5 N moving force in both directions
- Adaptable bolt function: dead bolt or spring bolt (non-VdS) setting
- Bolt with 2 M4 threads
- Lock mounting set, incl. 3 M6 screws

Kaba Questor Features:

- Motorised lock with automatic locking
- Adaptable bolt function: dead bolt/spring bolt
- Fast retrofitting, standard footprint
- High quality, rugged metal input unit with elegant design
- LCD display
- Long battery life
- Battery compartment accessible externally
- Time lock functions: weekly locking programme, holiday periods, yearly repeating periods
- Audit Trial
- ICS verifies whether an authorised person really is on-site, in front of the lock
- ICS provides a virtual connection between the lock and a second party that generates one time valid opening codes
- No keys and no other hardware are required for identification
- Duress code and remote disabling.

Kaba Mauer SL525

The “All-in-One” Motorised Combination Lock

“All-in-One”

The SL 525 electronic safe lock has been developed on the basis of the “All-in-One” concept. This means that the lock integrates a range of functions that would normally require accessories, and extensions.

State-of-the-art HLI microelectronics allow a range of functions that are unparalleled. Motorised Bolt Lock, LCD Screen, Time Lock and Delay, Audit Trail with time and date stamp, Multi-Stage Code Hierarchy, easy programming via LCD Screen or Optional Software. These are some of the functions included in this “All in One” package.

A Safelock for all specifications

The SL 525 is designed particularly for applications in the moderate to high security sector. This particularly relates to the Financial, and the Retail Industries. The standard footprint allows the lock to replace traditional mechanical Safelocks, and/or Time locks. With diverse functions and the computer programmable inputs and outputs, this allows each installed system to be programmed to your exact specification. This unique flexibility, in combination with extremely easy installation and self-explanatory operation, means that the range of applications is virtually unlimited.

Convenient operation

Whilst the installer will benefit, from the easy and fast installation, Security officers or users consider other attributes to be important: security, reliability, and approval by International certification bodies. The easy-read Liquid-Crystal Display (LCD) is a major advantage, providing self-explanatory

operations in various languages. Users are prompted by self-explanatory function symbols through the clearly structured menu. The relevant code holder has access only to the functions enabled for his or her authorisation level. Operation is very simple using the keypad or the optional Windows®-based software.

Elegant design

Models SL 525 are available in two housing colours: black and light grey. For visual distinction the keypads are blue.

Programming software

On model SL 525, the Programming Software allows convenient programming of the functions using your Computer. In addition, the lock configuration can be stored conveniently - without the program codes, and can be transferred to a different lock if necessary.

Audit Trail

The Audit Trail includes Time and Date Stamp. The User's ID is recorded every time the lock is opened, deterring internal theft.

The Audit Trail is downloaded to the Computer using the optional Software. The audit can be stored as a file or printed.



SL 525 Features

- Motorised lock with automatic locking
- Adaptable bolt function: dead bolt / spring bolt
- Fast retrofitting, standard footprint
- High-quality, rugged metal input unit with elegant design
- Large, easy-read liquid-crystal display (LCD)
- Long battery life
- Battery compartment accessible externally
- Time lock functions: weekly locking programme, holiday periods, yearly repeating periods
- Time opening delay with confirmation window
- 4 hierarchy levels: Master, Manager, User and Courier
- Dual mode
- Code denial
- Remote disabling
- Duress code
- Inputs/outputs integrated in lock unit for example, alarm connection and remote supervision etc.
- Audit Trail.

Approvals / Certificates

- EN1300 B / VdS Class 2
- Optional Spy Shield available.

Spy Shield also available with Axessor, Questor and SL525.



Auditcon[®] Model 552

Features and benefits at a glance

Numerical Keypad

Quick Entry.

Wrong Try Lockout

The lock will not allow access to any user for a period of 3 minutes after 5 incorrect combinations are entered. Thereafter 1 incorrect combination will continue the lockout for a period of 3 minutes and will reset after a valid combination is entered.

Alarm Interface

(Optional) Activates the lock's duress condition, sending a silent alarm, when combined with a connection to an existing alarm system.

Easy Retrofit

The lock has the same footprint as most mechanical locks making it easy to install.

Users

Up to 99 users.

8 Digit Access

Users select their own changeable combination with the first two digits serving as the user's identification number.

Audit Trail

Number of entries/activities is 400 records in sequential order, Time and date stamp. Optional Auditcon software required to display or file the lock audit reports using a program which runs under Microsoft Windows Software[®].

Supervisor/Subordinate Mode

Allows access by a subordinate only after a supervisory combination has been entered. The subordinate combination does not have to be entered with a certain period of the supervisory combination.

Additional security features available on all models

Dual Custody

Two Person Integrity, which requires two users to open the lock.

Time Delay Mode

Programmable 1-99 minutes before access is gained.

Approvals / Certificates

- EN1300 B / VdS Class 2 / SEAP 3 with Anti Spy Shield and Software

Optional Spy Shield available round or vertical.

The only true stand-alone safe lock designed for retail, commercial and industrial. It utilises the award winning Powerstar technology (no more batteries). The new Auditcon 2 lock series features faster power up, improved serviceability, making securing valuables easier than ever before. The 552 includes 2 per day Time Window Access, Time Delay Override, programmable Time Lock (from 1 to 255 hours) restricting all lock access, as well as 400 date and time stamped audit events.

- 8 digit code
- Supervisor/subordinate access control
- Up to 99 users
- Duress alarm
- Wrong try lockout (5 attempts) for three minutes
- 400 event audit trail with time/date stamp
- Time delay
- Round or vertical housing available
- Slidebolt or deadbolt available

Auditcon GEN II Specifications

Features	552
Keypad Housing Styles	Round/Vertical
Bolt Styles	Dead Bolt/Slide Bolt
Access Users	99 Access Users
Combination Length	8-digit combo
Uploadable Programming*	Yes
Downloadable Audits*	400
Power Source	Self- Powered
Supermaster Reset	Yes
Manager Code	Yes
Wrong Try Lockout	Yes
Supervisor/Subordinate Mode	Yes
Single/Dual Custody Mode	Yes
Time Delay	1-99 min delay
	1-20 min opening
Time Delay Override	Yes
Time Delay Display	Optional
Time and Date	Yes
Timed Lockout	Yes
Window Lockout	Yes
Time Windows	Yes

Auditcon[®] Model 252

The only true stand-alone safe lock designed for retail, commercial and industrial. It utilises the award winning Powerstar technology (no more batteries). The new Auditcon 2 lock series features faster power up, improved serviceability, making securing valuables easier than ever before.

- 8 digit code
- Up to 20 users
- Wrong try lockout for three minutes
- Time delay 1-99 mins
- Round or vertical housing
- Supervisor/subordinate access control stamp
- Duress alarm
- Remote lockdown input
- 100 event audit trail -not date/time stamp
- Slidebolt or deadbolt available

Auditcon GEN II Specifications

Features	252
Keypad Housing Styles	Round/Vertical
Bolt Styles	Dead Bolt/Slide Bolt
Access Users	99 Access Users
Combination Length	8-digit combo
Uploadable Programming*	Yes
Downloadable Audits*	100
Power Source	Self- Powered
Supermaster Reset	Yes
Manager Code	Yes
Wrong Try Lockout	Yes
Supervisor/Subordinate Mode	Yes
Single/Dual Custody Mode	Yes
Time Delay	1-99 min delay
	1-20 min opening
Time Delay Override	Yes
Time Delay Display	Optional
Time and Date	No
Timed Lockout	No
Window Lockout	No
Time Windows	No



Features and benefits at a glance

Numerical Keypad

Quick Entry.

Wrong Try Lockout

The lock will not allow access to any user for a period of 3 minutes after 5 incorrect combinations are entered. Thereafter 1 incorrect combination will continue the lockout for a period of 3 minutes and will reset after a valid combination is entered.

Alarm Interface

(Optional) Activates the lock's duress condition, sending a silent alarm, when combined with a connection to an existing alarm system.

Easy Retrofit

The lock has the same footprint as most mechanical locks making it easy to install.

Users

Up to 20 users.

8 Digit Access

Users select their own changeable combination with the first two digits serving as the user's identification number.

Audit Trail

Number of entries/activities is 100 events in sequential order. Requires optional Auditcon software package to display or file the lock audit reports. Uses a program which runs under Microsoft Windows Software[®].

Supervisor/Subordinate Mode

Allows access by a subordinate only after a supervisory combination has been entered. The subordinate combination does not have to be entered with a certain period of the supervisory combination.

Additional security features available.

Dual Custody

Two Person Integrity, which requires two users to open the lock.

Time Delay Mode

Programmable 1-20 minutes before access is gained.

Approvals / Certificates

- EN1300 B / VdS Class 2

Optional Spy Shield available round or vertical.



Auditcon[®] Model 52 Series

Features and benefits at a glance

Numerical Keypad

Quick Entry.

Wrong Try Lockout

The lock will not allow access to any user for a period of 3 minutes after 5 incorrect combinations are entered. Thereafter 1 incorrect combination will continue the lockout for a period of 3 minutes and will reset after a valid combination is entered.

Easy Retrofit

The lock has the same footprint as most mechanical locks making it easy to install.

Users

Up to 2 users.

6 Digit Access

Users select their own changeable combination.

Additional Security Features Available on All Models

Dual Custody

Two Person Integrity, which requires two users to open the lock.

Manager/User Operation

Allows manager to add, delete, enable or disable an additional user.

Time Delay Mode (Model T52 only)

Programmable 1-99 minutes before access is gained. With a 1-20 minute opening window.

Approvals / Certificates

- EN1300 B / VdS Class 2

Optional Spy Shield available round or vertical.

The only true stand-alone safe lock designed for retail, commercial and industrial. It utilises the award winning Powerstar technology (no more batteries). The new Auditcon 2 lock series features faster power up, improved serviceability, making securing valuables easier than ever before.

- 6 digit code
- Dual custody
- Up to 2 users
- Manager / user operation
- Wrong try lockout (5 attempts) for three minutes
- Time delay mode (T52 model only)
- Slidebolt or deadbolt available
- Round or vertical housing available

Specifications

Features	52/T52
Keypad Housing Styles	Round/Vertical
Bolt Styles	Dead Bolt/Slide Bolt
Access Users	2 Access Users
Combination Length	6-digit combo
Uploadable Programming*	No
Downloadable Audits*	No
Power Source	Self- Powered
Supermaster Reset	Yes
Manager Code	Yes
Wrong Try Lockout	Yes
Supervisor/Subordinate Mode	Yes
Single/Dual Custody Mode	Yes
Time Delay	1-99 min delay (T52)
	1-20 min opening (T52)
Time Delay Override	No
Time Delay Display	Optional
Time and Date	No
Timed Lockout	No
Window Lockout	No
Time Windows	No

Variator B - 70076



The changeable keylock with 11 levers, key not removable when lock is open. User double bitted keys available 120,150,164mm lengths, in nickel plated diecast.

- Changeable lock with dead bolt for safes CEN III-V.
- Approx. 60 million theoretical variations.
- Standard footprint.

- User-friendly change from the front utilising a change activator. i.e. without having to dismantle the door covering or the openings in the door interior.
- Change can however, also be initiated via a slide unit at the back of the lock.
- The lock can be supplied in works or user locking mode.

Variator B - Keys with Mauer bow

Lock

- Changeable locking works
- 11 levers, electrolytic galvanised steel
- Key not removable when the lock is opened
- Die-cast lock casing and bolt
- Bolt with 2 M4 threads
- Prepared for bolt extension to the front
- Weight approx. 530g

Admissible mounting positions

Right hand lock, opening clockwise



Approvals / Certificates

- EN1300 B / VdS Class 2

Variator A - Keys with Mauer bow

Lock

- Changeable locking works
- 8 levers, electrolytic galvanised steel
- Key not removable when the lock is opened
- Die-cast lock casing and bolt
- Weight approx. 460g

Admissible mounting positions

Right hand lock, opening clockwise



Approvals / Certificates

- EN1300 A / VdS Class 1

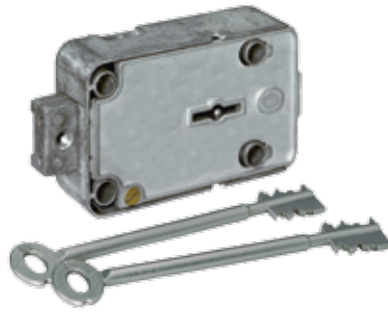
Variator A - 70091



The changeable keylock with 8 levers, key not removable when lock is open. User double bitted keys available 90,120,150,164mm lengths, in nickel plated diecast.

- Changeable lock with dead bolt for safes CEN 0-II.
- Approx. 280,000 theoretical variations.
- Standard footprint.

- User-friendly change from the front utilising a change activator. i.e. without having to dismantle the door covering or the openings in the door interior.
- Change can however, also be initiated via a slide unit at the back of the lock.
- The lock can be supplied in works or user locking mode. Standard footprint.



Praetor 70079

Lock

- 11 levers, electrolytic galvanised steel
- Key not removable when the lock is opened
- Die-cast lock casing and bolt
- Bolt with 2 M4 threads
- Prepared for bolt extension to the front
- Weight approx. 530g

Admissible mounting positions

Right hand lock, opening clockwise



Approvals / Certificates

- EN1300 B / VdS Class 2

The mechanical keylock with 11 levers, key not removable when lock is open. User double bitted keys available 120,150,164mm lengths, in nickel plated diecast.

- Standard footprint.
- Approx. 60 million theoretical variations.
- Lock with dead bolt for safes CEN III-V.
- Key carrier Servant K provides a further key variation on the standard keys



President 71111

Lock

- 8 levers, electrolytic galvanised steel
- Key not removable when the lock is opened
- Die-cast lock casing and bolt
- Weight approx. 340g

Admissible mounting positions

Right hand lock, opening clockwise



Approvals / Certificates

- EN1300 A / VdS Class 1

The mechanical keylock with 8 levers, key not removable when lock is open.

The high sales rate reflects this lock's success world-wide. User double bitted keys available 65, 90, 120,150,164mm lengths, in nickel plated diecast.

- Approx. 280,000 theoretical variations.
- Lock with dead bolt for safes CEN 0-II.
- Standard footprint.

Contact details

Product	Email	Telephone
 <p data-bbox="660 622 767 651">Safelocks</p>	<p data-bbox="836 622 1070 651">safelocks@kaba.co.uk</p>	<p data-bbox="1203 622 1374 651">0870 609 0271</p>
 <p data-bbox="512 846 767 875">High Security Cylinders</p>	<p data-bbox="863 846 1050 875">oem@kaba.co.uk</p>	<p data-bbox="1203 846 1374 875">0870 609 0272</p>
 <p data-bbox="507 1070 767 1099">Access Control Systems</p>	<p data-bbox="852 1070 1061 1099">access@kaba.co.uk</p>	<p data-bbox="1203 1070 1374 1099">0870 000 5625</p>
 <p data-bbox="560 1294 767 1323">Push Button Locks</p>	<p data-bbox="852 1294 1061 1323">unican@kaba.co.uk</p>	<p data-bbox="1203 1294 1374 1323">0870 000 5625</p>
 <p data-bbox="555 1518 767 1547">Architectural Locks</p>	<p data-bbox="852 1518 1061 1547">access@kaba.co.uk</p>	<p data-bbox="1203 1518 1374 1547">0870 000 5625</p>
 <p data-bbox="639 1742 767 1771">Hotel Locks</p>	<p data-bbox="852 1742 1061 1771">hotels@kaba.co.uk</p>	<p data-bbox="1203 1742 1374 1771">0870 609 0269</p>
 <p data-bbox="533 1977 767 2007">Time and Attendance</p>	<p data-bbox="842 1977 1070 2007">systems@kaba.co.uk</p>	<p data-bbox="1203 1977 1374 2007">0870 609 0268</p>

Terminology

Key bolt systems

Mechanical bolt systems are operated manually via a spindle during the opening or closing of the lock. As opposed to this motorised bolt systems enable automatic opening and closing of the lock.

Power supply

Depending on the product the electronic lock is supplied with power via the power supply system, by batteries or via a generator (independent of the power supply system, without batteries). Irrespective of the power source the power consumption for all Kaba electronic locks is very low.

Redundancy

In the case of extremely high security requirements the dual provision of failure critical component parts is advantageous. For this purpose the Paxos compact lock is fitted with complete system duality. On a fault

being detected the lock switches over automatically to the redundant system part. As opposed to this the lock Code-Combi B has a mechanical lock with double-bitted keys in order to guarantee continual availability.

Single code systems

In single code systems the security control unit allocates a one time combination code to the user with which he/she can open a specific lock on one single occasion. This solution thus provides maximum reconstruction of events combined with maximum user friendly security without the need for complex code administration, requiring only minimal administrative work.

Time Management

Time functions provide the possibility of defining individual access or restriction times for example time delay, blocking during certain weekdays or holidays.

Spying - safety precautions

LCD constructions with a restricted visual angle are used where the codes are to be entered without being seen by an unauthorised party. The dial knob input unit of the Paxos compact lock provides further protection against espionage. By turning the knob a random pair of digits is altered within the display. By pressing the knob the number is confirmed as a component part of the code and the next pair of digits generated. Alternatively the Auditcon and SL52X series are available with a Spy Shield as an optional extra.

Depending on the respective evaluation of the security and functional criteria selected, you can choose the lock appropriate to your specific requirement profile. Please see the individual product descriptions to determine what functions are available in respect of any particular lock.

CEN/VdS – Safe and Lock Classes

Burglary Resistance Grade as per EN 1143-1 as per VdS 2450	Lock Configuration as per ENV 1300		Lock Configuration as per VdS 2396	
	Number of Locks	Lock Class	Number of Locks	Lock Class
0	1	A	1	1
I	1	A	1	1
II	1	A	1	1
III	1	B	1	2
IV	2	B	2	2
V	2	B	2	2
VI	2	C	2	3
VII	2	C	2	3
VIII	2	C	2	3
IX	2	C	2	3
X	2	C	2	3
XI	2 (3)	D (C)	2 (3)	4 (3)
XII	2 (3)	D (C)	2 (3)	4 (3)
XIII	2	D	2	4



Kaba Ltd
Lower Moor Way
Tiverton Business Park
Devon
EX16 6SS
Tel: 0870 000 5625
Fax: 0870 000 5397
Email: info@kaba.co.uk
www.kaba.co.uk